



Forenta
SARATOGA

Garment Conveyors and Systems

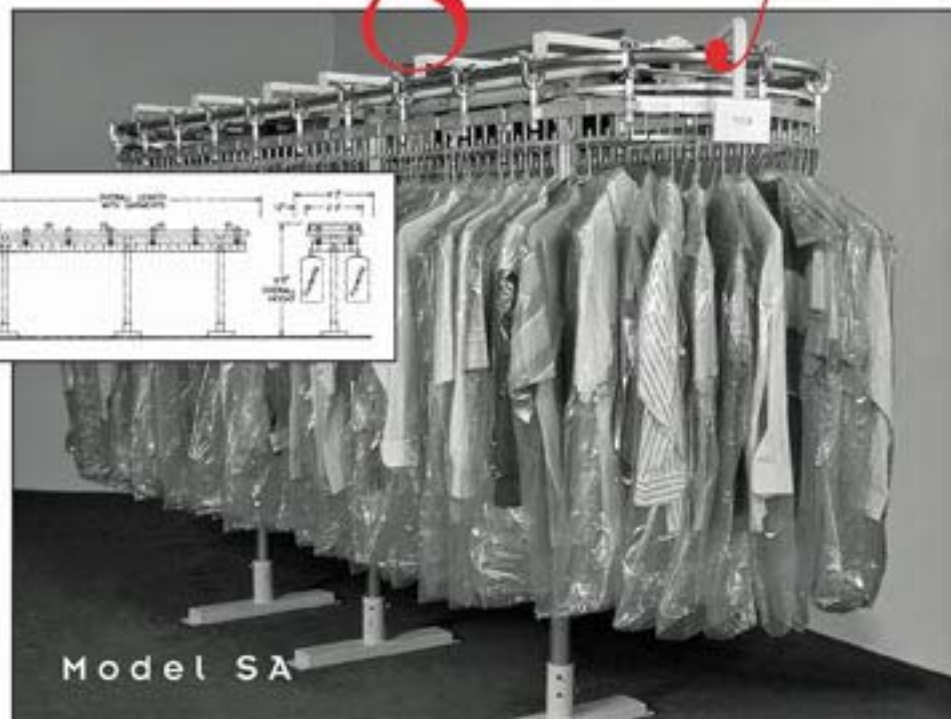
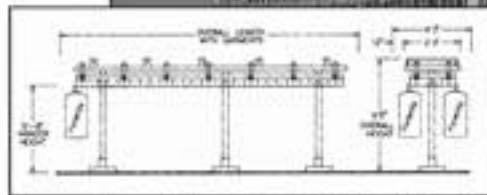
SARATOGA

Storage-Veyor

- Stainless Steel Track
- King Size Nylon Trolley Bearings with Stainless Steel Balls
- Smooth Die-Cast Aluminum Yokes and Hanger Sections
- 2 Manual Switches Standard
- One Toggle Switch and One Foot Switch or Two of Either
- Available in L-Shape, T-Shape, U-Shape, and E-Shape
- Overall Height 6'4"
- Overall Width 52"
- 10 Order Slots per Foot
- Advanced Design
- Choice of Colors (see specifications on back)
- Expandable — Add Any Length
- Dependability — Fully Warranted

MODEL (No. of Slots*)	LENGTH (In Feet/Loaded)	MODEL (No. of Slots*)	LENGTH (In Feet/Loaded)
SA-200	11'	SA-600	31'
SA-220	12'	SA-620	32'
SA-240	13'	SA-640	33'
SA-260	14'	SA-660	34'
SA-280	15'	SA-700	36'
SA-300	16'	SA-720	37'
SA-320	17'	SA-740	38'
SA-340	18'	SA-760	39'
SA-360	19'	SA-780	40'
SA-380	20'	SA-800	41'
SA-400	21'	SA-820	42'
SA-420	22'	SA-840	44'
SA-440	23'	SA-900	46'
SA-460	24'	SA-940	48'
SA-500	26'	SA-960	49'
SA-540	28'	SA-980	50'
SA-560	29'	SA-1000	51'
SA-580	30'		

* 10 slots per foot



Model SA

The (SA) Storage-Veyor and (EV) Eska-Veyor are space-saving storage hanging conveyors — saving up to 60% of floor space. These conveyors effectively double a dry cleaner's hanging capacity, saving space, employee time, and money.

Eska-Veyor



Solves any space problem! Slimline design gives more headroom.

Model EV

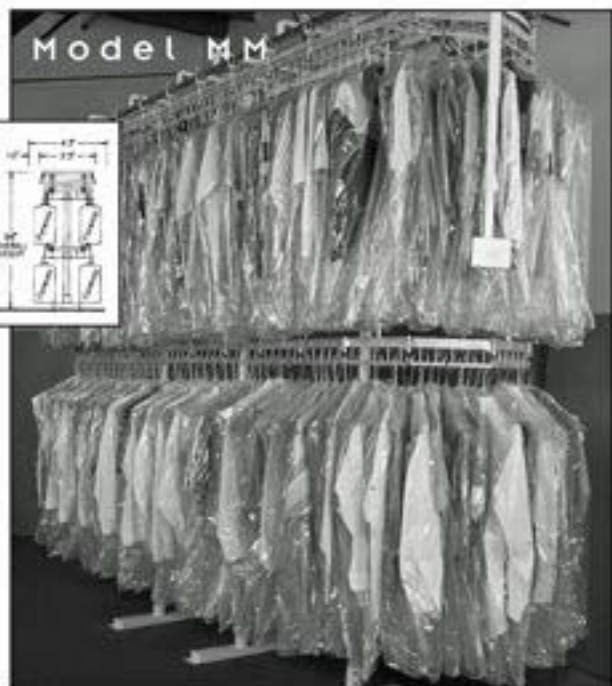
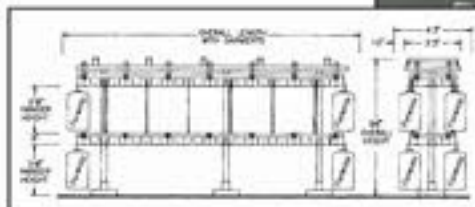
- King Size Nylon Bearings at Every Moving Point for Quiet Operation — No Metal to Metal Contact
- Choice of Colors (see specifications on back)
- Expandable — Add Any Length
- Advanced Design
- Dependability — Fully Warranted
- Stainless Steel Track
- Slimline Design Die Casting Gives 2" More Headroom than Any Other Conveyor
- 2 Manual Switches Standard
- One Toggle Switch and One Foot Switch or Two of Either
- Available in L-Shape, T-Shape, U-Shape, and E-Shape

MODEL (No. of Slots*)	APPROX. NO. ADDL. FLOOR SUPPORTS	LENGTH (In Feet/Loaded)
EV-380	1	18'
EV-400	1	19'
EV-420	2	20'
EV-440	2	21'
EV-460	2	22'
EV-480	2	23'
EV-500	3	24'
EV-520	3	25'
EV-540	3	26'
EV-560	4	27'
EV-580	4	28'
EV-600	4	29'
EV-620	5	30'
EV-880	6	43'
EV-1000	8	49'

* 10 slots per foot

Mini-Max

- Stainless Steel Track
- King Size Nylon Trolley Bearings with Stainless Steel Balls
- Smooth Die-Cast Aluminum Yokes and Hanger Sections
- 2 Manual Switches Standard
- One Toggle Switch and One Foot Switch or Two of Either
- Available in L-Shape, T-Shape, U-Shape, and E-Shape
- Overall Height 6'4"
- Overall Width 5'2"
- 10 Order Slots per Foot
- Advanced Design
- Choice of Colors (see specifications on back)
- Expandable – Add Any Length
- Dependability – Fully Warranted

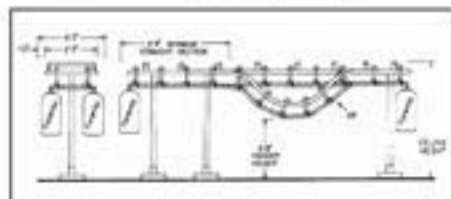


Double your hanging capacity with the Mini-Max as a shirt conveyor or drycleaning garment storage conveyor.

The Dip-Veyor offers flexibility for additional storage with the one station drop for placing and retrieving customer orders.

- King Size Nylon Bearings at Every Moving Point for Quiet Operation – No Metal to Metal Contact
- Choice of Colors (see specifications on back)
- Expandable – Add Any Length
- Advanced Design
- Dependability – Fully Warranted
- Stainless Steel Track
- Slimline Design Die Casting Gives 2" More Headroom than Any Other Conveyor
- 2 Manual Switches Standard
- One Toggle Switch, One Foot Switch or Two of Either
- Available in L-Shape, T-Shape, U-Shape, and E-Shape

Dip-Veyor



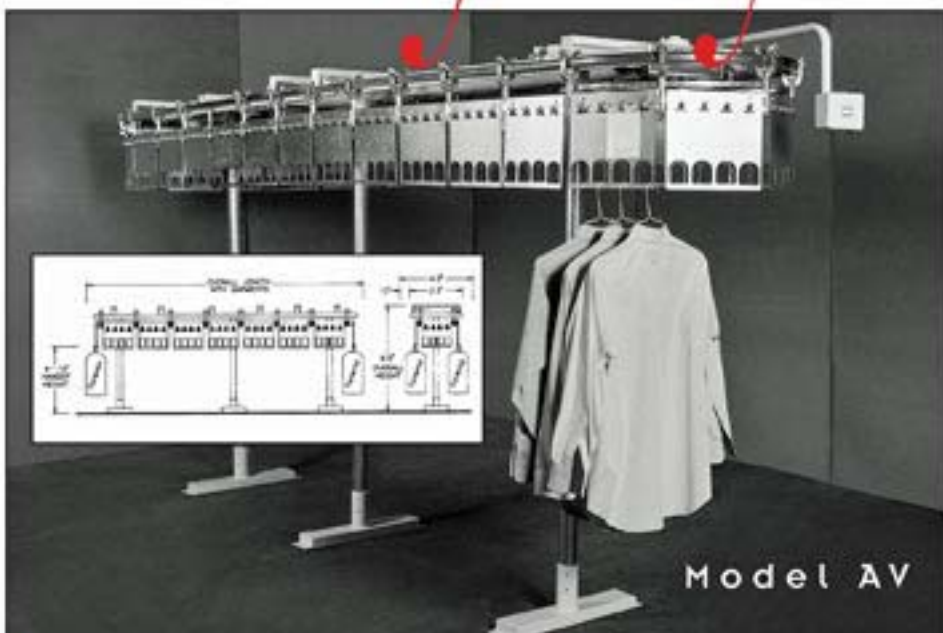
MODEL (No. of Slots*)	APPROX. NO. ADDTL. FLOOR SUPPORTS	LENGTH (In Feet/Loaded)
DV-540	4	25'
DV-580	4	28'
DV-630	4	29'
DV-620	6	30'
DV-640	6	31'
DV-680	6	33'
DV-700	6	34'
DV-740	6	36'
DV-780	6	38'
DV-800	6	39'
DV-820	8	40'
DV-840	8	41'
DV-860	8	42'
DV-880	8	43'
DV-1000	8	49'

* 10 slots per foot

Assembly-Veyor

MODEL (No. of Slots)	NO. CHECKING SLOTS	LENGTH (In Feet/Loaded)
AV-64	64	9'
AV-72	72	10'
AV-80	80	11'
AV-88	88	12'
AV-96	96	13'
AV-104	104	14'
AV-112	112	15'
AV-120	120	16'
AV-128	128	17'
AV-136	136	18'
AV-144	144	19'
AV-152	152	20'
AV-160	160	21'

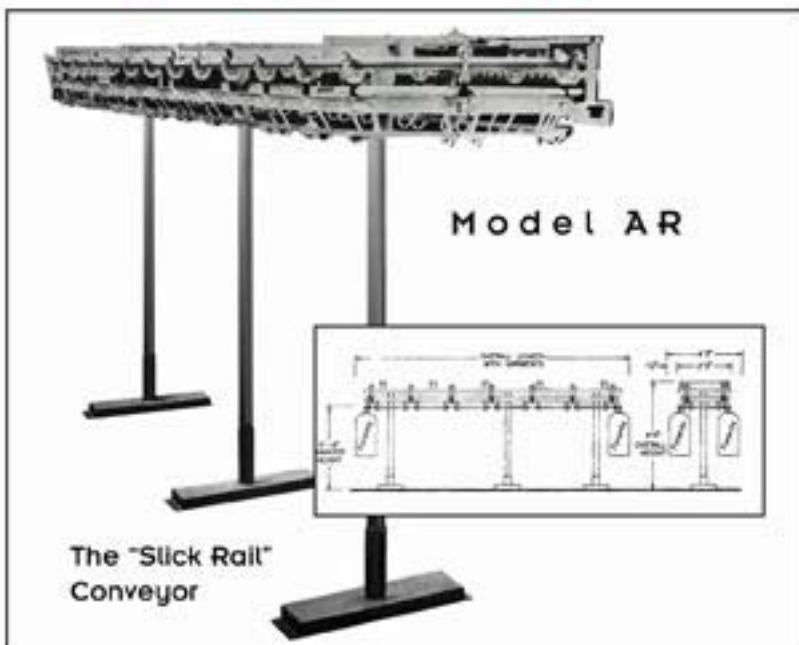
Saratoga's Model AV Conveyor saves space and reduces worker fatigue, while eliminating your assembly bottlenecks. Fast automatic assembly eliminates the miles of walking which exists in many slick rail assembly operations. 2 foot control switches are standard. Four slots per 12" panel section, with clips for each slotted section to hold tickets.



Model AV

- Stainless Steel Track
- King Size Nylon Trolley Bearings with Stainless Steel Balls
- Smooth Die-Cast Aluminum Yokes & Hanger Sections
- 2 Manual Switches Standard
- One Toggle Switch and One Foot Switch or Two of Either
- Available in L-Shape, T-Shape, U-Shape, and E-Shape
- Overall Height 6'4"
- Overall Width 52"
- 10 Order Slots per Foot
- Advanced Design
- Choice of Colors (see back)
- Expandable — Add Any Length
- Dependability — Fully Warranted

Auto-Rak



The "Slick Rail" Conveyor

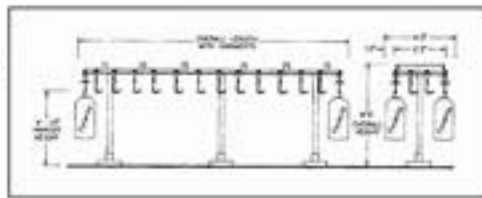
MODEL (No. of Slots)	LENGTH (In Feet/Loaded)	MODEL (No. of Slots)	LENGTH (In Feet/Loaded)
AR-180	10'	AR-480	25'
AR-200	11'	AR-540	28'
AR-220	12'	AR-580	30'
AR-240	13'	AR-600	31'
AR-260	14'	AR-620	32'
AR-280	15'	AR-660	34'
AR-300	16'	AR-700	36'
AR-320	17'	AR-740	38'
AR-340	18'	AR-780	40'
AR-360	19'	AR-800	41'
AR-380	20'	AR-820	42'
AR-400	21'	AR-860	44'
AR-420	22'	AR-900	46'
AR-440	23'	AR-980	49'
AR-460	24'	AR-1000	51'

- Stainless Steel Track
- No Slots — a True "Slick Rail"
- Electrically Reversible Garment Storage — Either Direction
- Hand or Foot Switches
- Hanger Moves Freely
- Available in L-Shape, T-Shape, U-Shape, and E-Shape
- Overall Height 6'5", Overall Width 52"
- For Alphabetical, Numerical, Consecutive or Any System
- Continuous Rack for Hangers
- Choice of Colors (see specifications on back)
- Expandable — Add Any Length
- Dependability — Fully Warranted

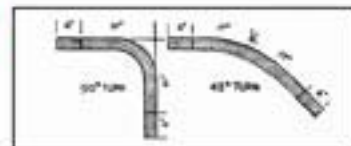
SARATOGA

Little Giant

- Transporting, Sorting and Distribution
- From finishing to assembly, from spotting to finishing
- From assembly to call office conveyor
- From steam tunnel to presses, etc.

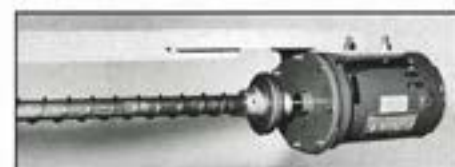


Screw Conveyor



The economical way to increase production work flow of single hangered garments or complete orders.

- 45° or 90° Turns Standard
- Flexible Steel Shaft
- Twenty, 20° Vertical Turns are Standard, and are Constructed Like the Horizontal Turns
- Carries Hangers in a Straight Line or Through a 20° or Less Vertical Rise
- 15 Feet/Minute, Standard Speed
- Easy Installation: Floor Supported, or Hung from Ceiling



Common Specifications

- Manual controls (toggle switch front, foot switch rear, or two of either)
- 115 Volt, 60 cycle single phase
- Standard Colors: Almond, Gray, White, Black, Blue, Green

WHEN ORDERING EQUIPMENT

Please state model number, color, type and location of controls, numbering system, and electrical specifications if other than 115 volt.

Construction Features

OVERVIEW

- Solid steel frame, with modular design allows for expansion as required.
- Stainless steel tracks and die-cast aluminum yokes with nylon ball bearing wheels insure smooth and quiet operation.
- Rotating parts use sealed ball bearings, minimizing lubrication and lessening the possibility of lubricant leakage.
- Power is transmitted from gearbox to the main drive sprocket by roller chain, eliminating gearbox oil seal strain caused by continuous reversing conveyor action.

FRAME

Our frame material is composed of high strength 2" steel channel for lateral and cross supports. Sophisticated engineering design, features maximum strength with less weight for easy installation.

TRACK

Conveyor track is made from high tensile strength stainless steel tubing. No rust, oxidation, or flaking of galvanized coating.

DRIVE COMPONENTS

- GEAR REDUCER** - A single, 30 to 1 ratio reducer is used to insure durability from the constant starting, stopping, and reversing action common to dry cleaning conveyors.
- MOTOR** - controlled torque for smoother starts matched with the gear reducer to give the best possible drive combination for load handling.
- ROLLER CHAIN** - from gearbox to main drive sprocket reduces strain on gear reducer seals, thus preventing leakage.
- SLEEVED NYLON BEARINGS** - used in hanger section, makes for a quieter performance while eliminating residue caused by metal-to-metal contact.
- SPEED** - conveyors operate at 85-90 feet per minute, so orders are brought quickly to pick-up station.

TROLLEY WHEELS

Nylon tired steel ball bearing wheels are pre-lubricated and built for long wear and low maintenance.

HANGERS

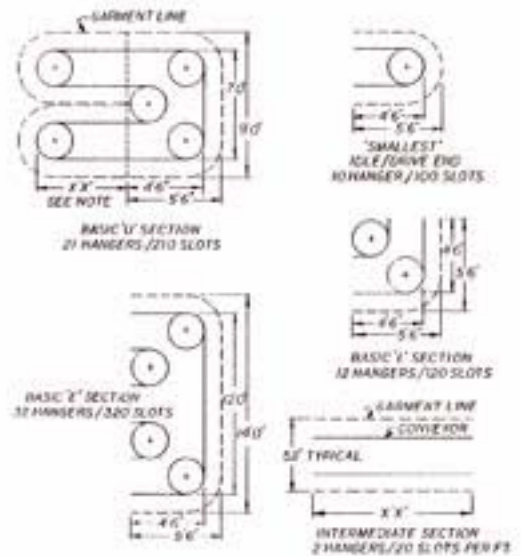
Cast from high quality, high tensile strength aluminum alloy that will not rust.

YOKES

Coated with zinc, adds strength to the hanger assembly. Smooth, rustproof finish.

IDLE & DRIVE WHEELS

Made from a high grade aluminum alloy. There is no steel contact with hanger assemblies which means less wear, less residue, and no rust.



Options

- AUTO-TROL, MICROPROCESSOR**
 - Electronic automation selects shortest route to drop location
 - User friendly, easy to program
 - Large, easy to read display
 - Large memory for data
 - Retrieves numbers in order of input.
 - Anti-reversing device prevents sudden direction changes



Forenta

SARATOGA

P.O. Box 607
Morristown, Tennessee USA 37814
(615) 586-5370