



Pants Toppers

Models 22PT, 222BTAC



22PT Fully Automatic



222BTAC Semi-Automatic

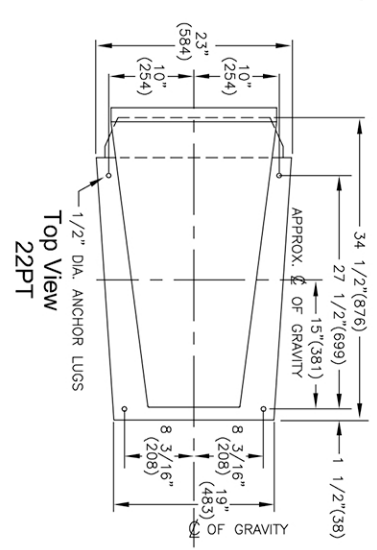
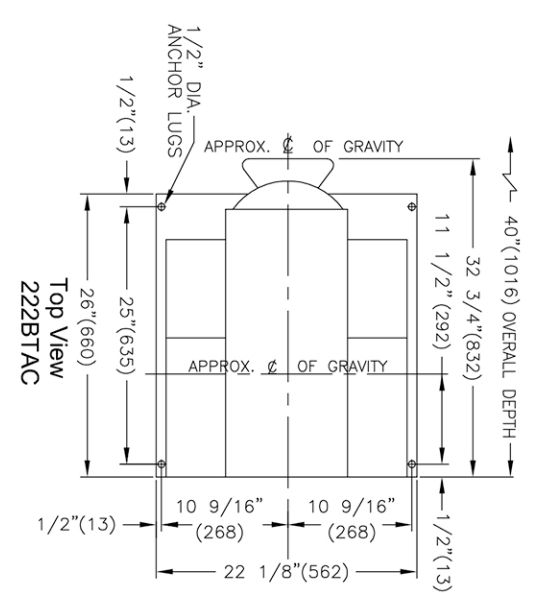
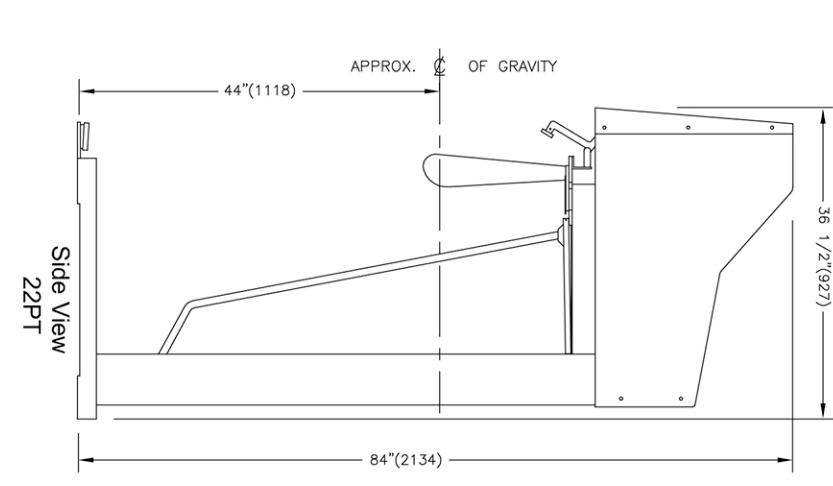
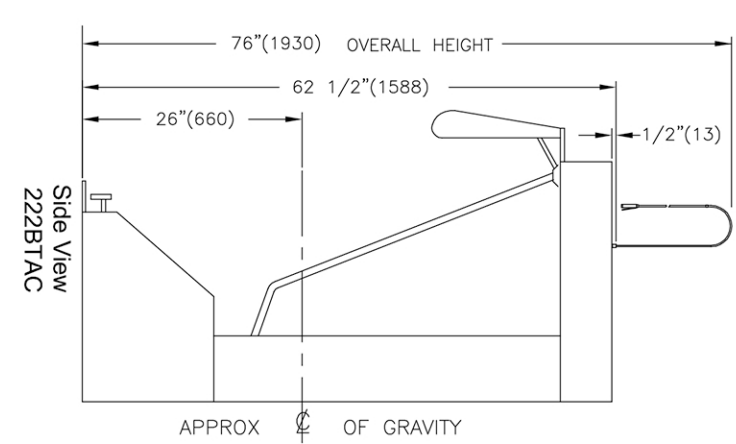
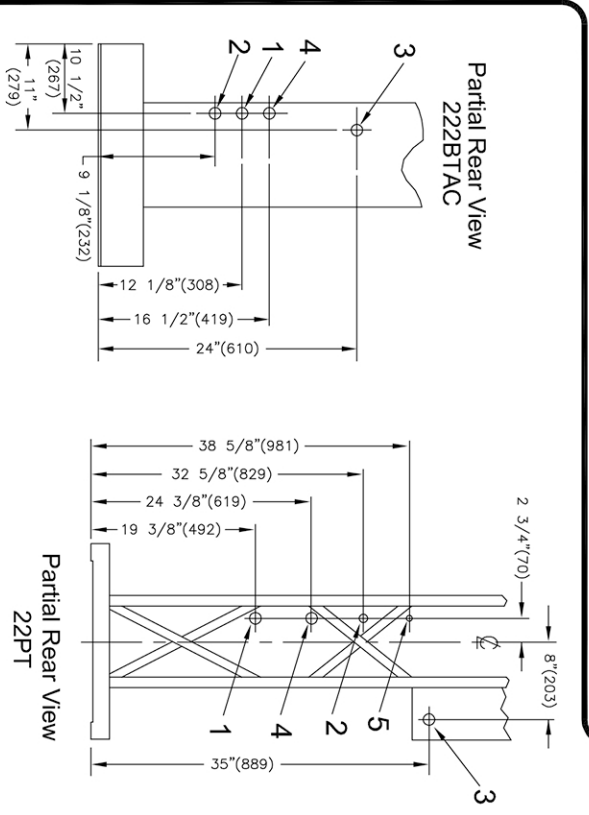
- Automatic waist expander
- Finishes wide range of sizes
- Clear buck for operator dressing
- 222BTAC has manual pleat shoes
- 22PT has disappearing pleat shoes
- Automatic cycle, simple, easy operation
- Heated buck, more steam penetration for better finishing

Vertical Pant Toppers are designed to be used in a system with Forenta Pant Leggers. This system used properly can increase pant pressing production significantly.

Specifications

Models 22PT, 222BTAC

Electrical connections	22PT	222BTAC
120V 50/60Hz 1PH 8Amps	standard	standard
230V 50/60Hz 1PH 4Amps	optional	optional
Steam and Air connection		
Steam Inlet	NPT 1/2"	NPT 1/2"
Steam Outlet	NPT 1/2"	NPT 1/2"
Rec. steam pressure	PSIG 75-85	PSIG 75-85
	KPa 517-586	KPa 517-586
Steam consumption	BHP 1	BHP 1
	kg/hr 15.6	kg/hr 15.6
Compressed air Inlet	NPT 3/8"	NPT 3/8"
Air consumption(per part)	free air/cycle at 55psig	free air/cycle at 55psig
	free air/cycle at 379kPa	free air/cycle at 379kPa
Rec. air pressure	PSIG 55	PSIG 55
	KPa 379	KPa 379
Water Inlet	NPT 1/4"	-
Weight (crated)		
Shipping	lbs 477	lbs 253
	kg 216	kg 115
1 Steam Outlet	3 Electrical connection	5 Water Inlet
2 Air connection	4 Steam Connection	



Detail Line Drawing

(millimeters shown in parentheses)